

Overview of Travel/Tourism Domain Activities

19th ~21st , April, 2017

TT&L WG Acting Chair

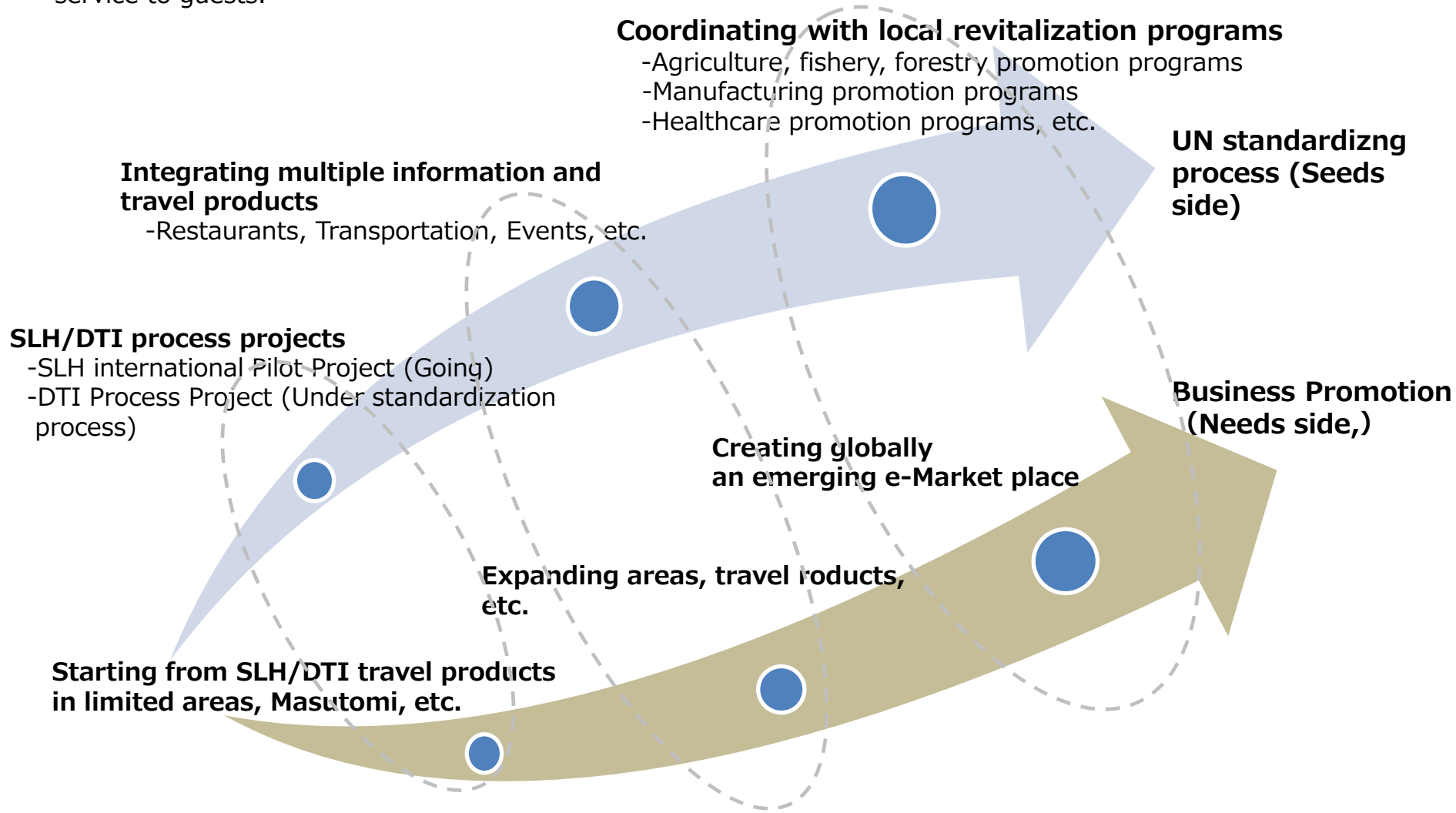
Akio Suzuki

Japanese Travel/Tourism Domain Activities into the Future

Original drawing by Hotta
2017-3-27

Starting from SLH Process Standardization

- A large number of SLHs exist globally.
- Each property is usually located in a local area and owned by a private owner.
- It is smaller in scale, but has multiple internal and local information for service to guests.



Why we work for SLHs

Big eCommerce Sites in the World:

Expedia

Priceline Group

-Booking. com

-Agoda. Com

Airbnb

Jalan.net

Travel.Rakuten.co.jp

CTrip

**High Commission
rate**

**Big e-Commerce
Sites not Serve
well for SLHs**

**A Large Volume of
SLHs Exist**

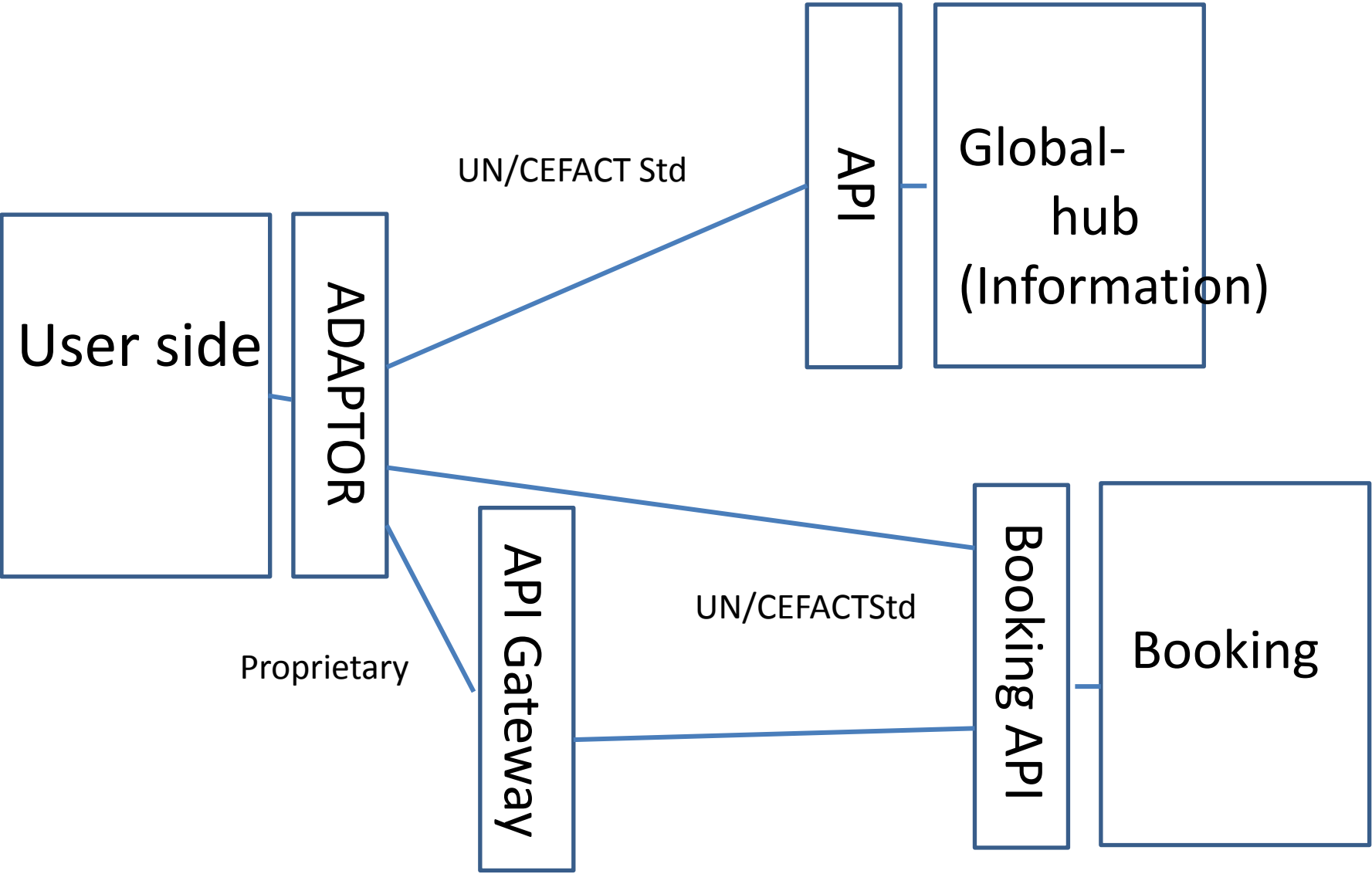
Outputs of SLH&DTI Standardization

Outputs	SLH Information Project	SLH Travel Product Project	SLH Reservation Project	DTI Project
BRS	Done	Done	Done	Done(Review needed)
RSM(CC,BIE)	Done	Done	Done	Not yet
Schema	Done	Done	Done	Not yet
Code List	Partly Done	Partly Done	Partly Done	Not yet
Publish in Forum Web Site	Done	Done	Done	Not yet
2 nd Stage International Pilot Project	Going	Going	Going	Not yet
Implementation Guide	Not yet	Not yet	Not yet	Not yet

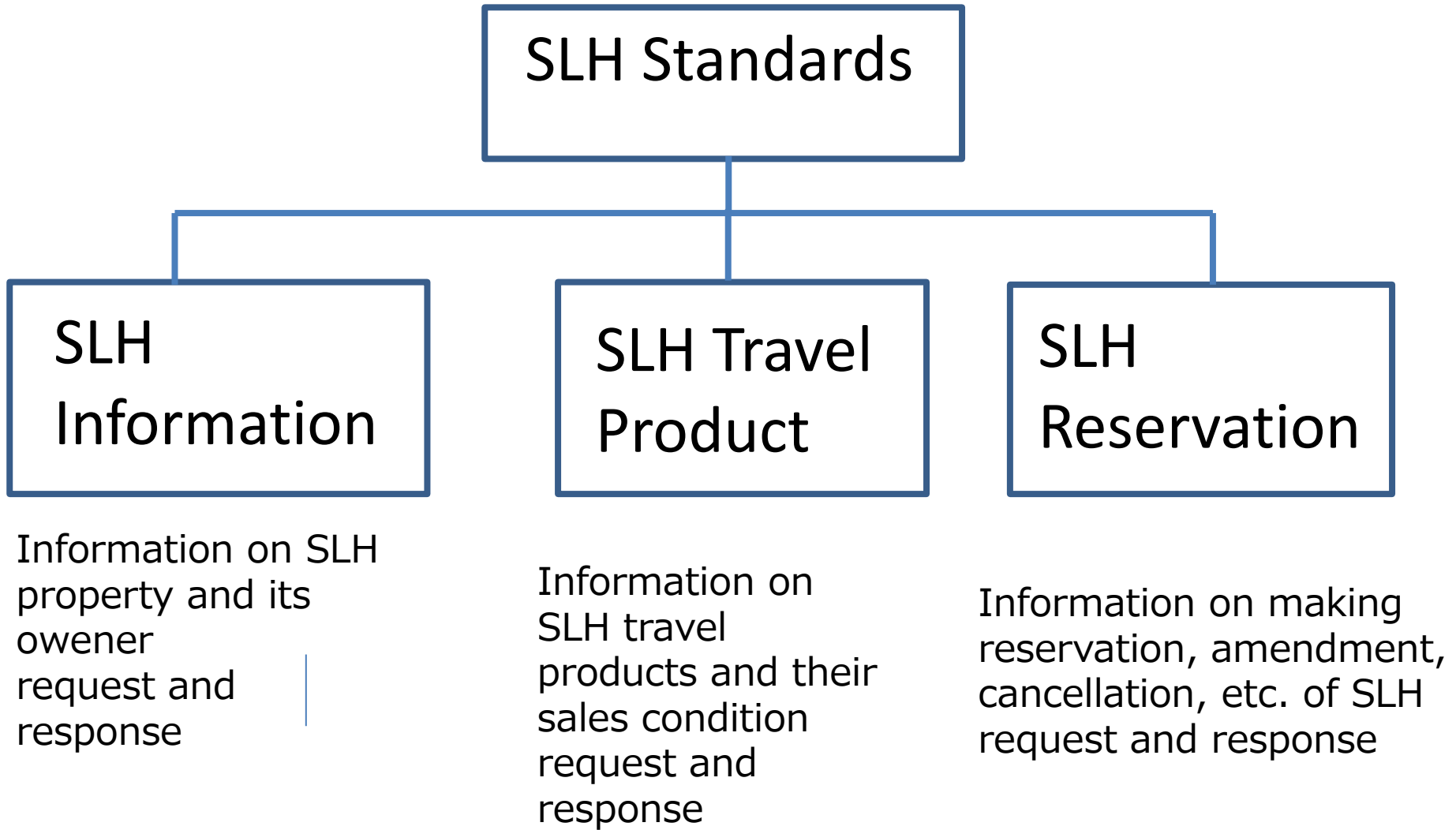
Standard Document Developed Date

	SLH Information P045	SLH Travel Product P095	SLH Reservation P106	DTI P1009
BRS	V1.0 (2006, Sep.06)	V1.0 (2009, Mar.03)	V1.0 (2012, Jun.04) V1.6 (2012 Oct.12)	V1.0 (2014 May25)
RSM	V1.0 (2007, Sep.12 V1.4 (2013, Apr.28	V1.0 (2009, May12) V1.5 (2012 Oct. 03)	V1.0 (2012 Nov.01) V1.0.2 (2013 Jan.17)	Not yet
Schema	2013, Feb.25	2013, Feb.25	done	Not yet
MSG Structure	2013, Apr.28	2012,Nov. 05)	2013 Jan 18	Not yet
Project Proposed	2004, May18 (Approved)	2004, Sep.13 2010, Feb.07 (Resubmitted)	2004, Sep. 13 2010, Feb. 07 (Resubmitted)	
Exit	2007, Sep.12	2009, May12	2012, Nov.01	
CC&BIE Library	2007B	2009A	2012B	

Use of API



SLH Standards



Use Case Diagram

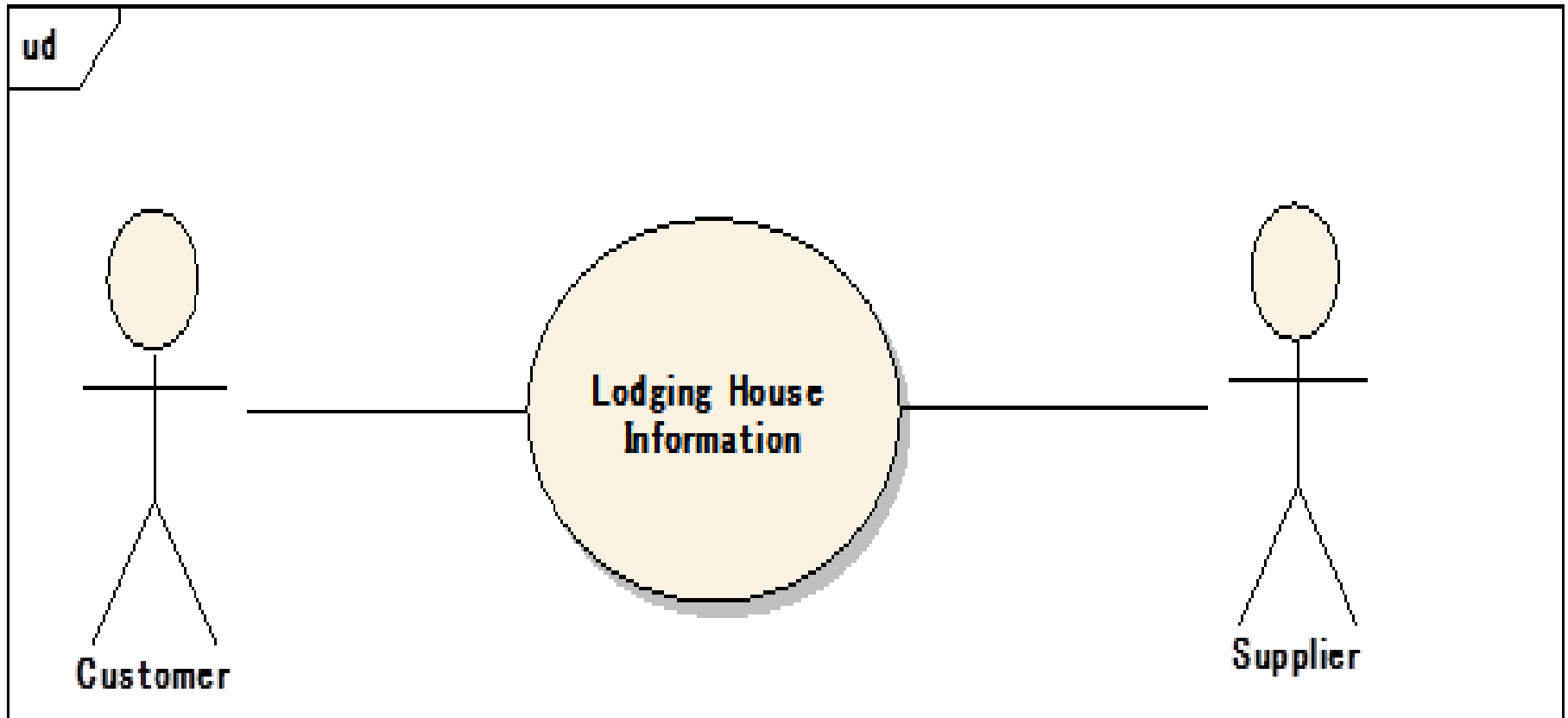
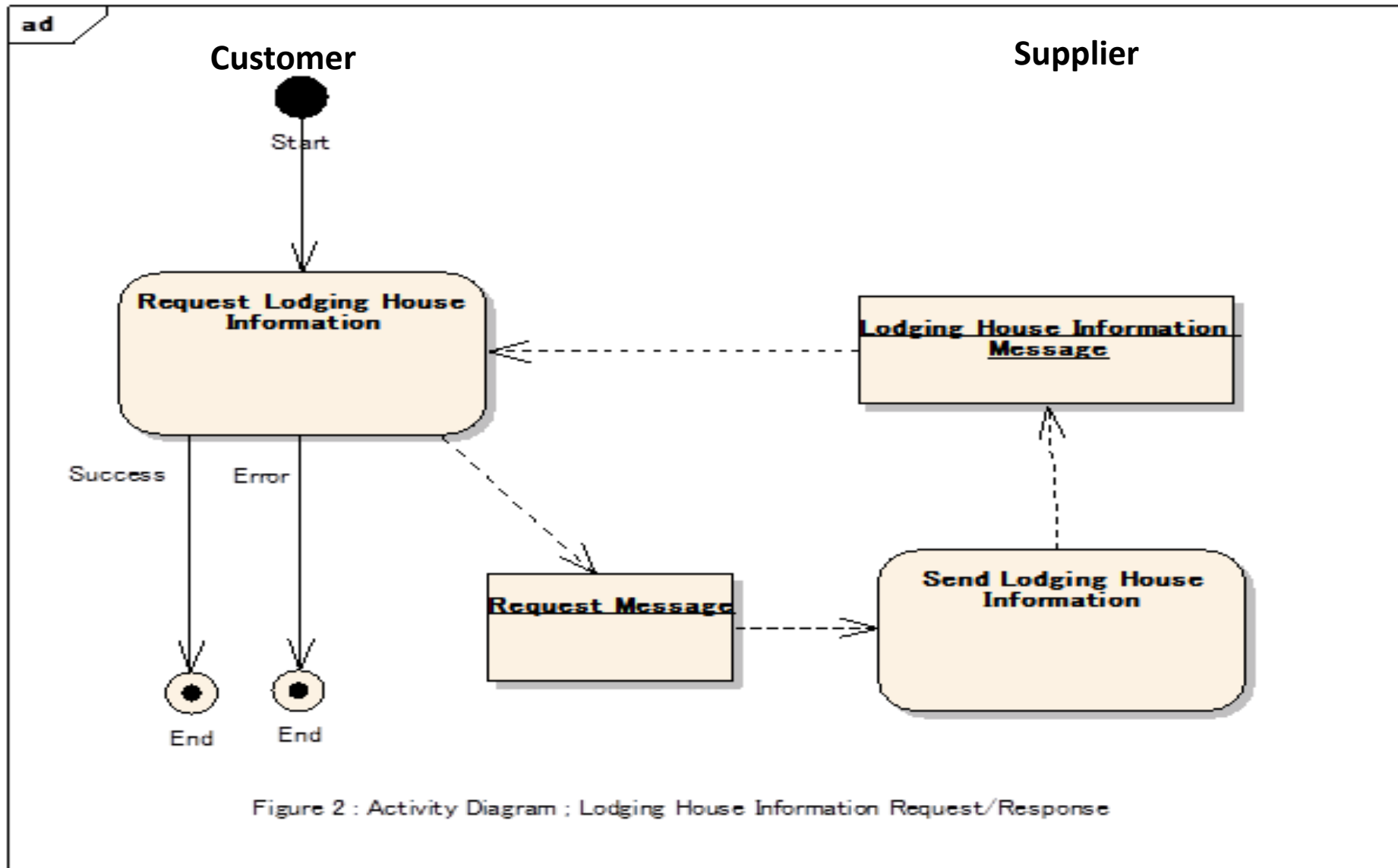


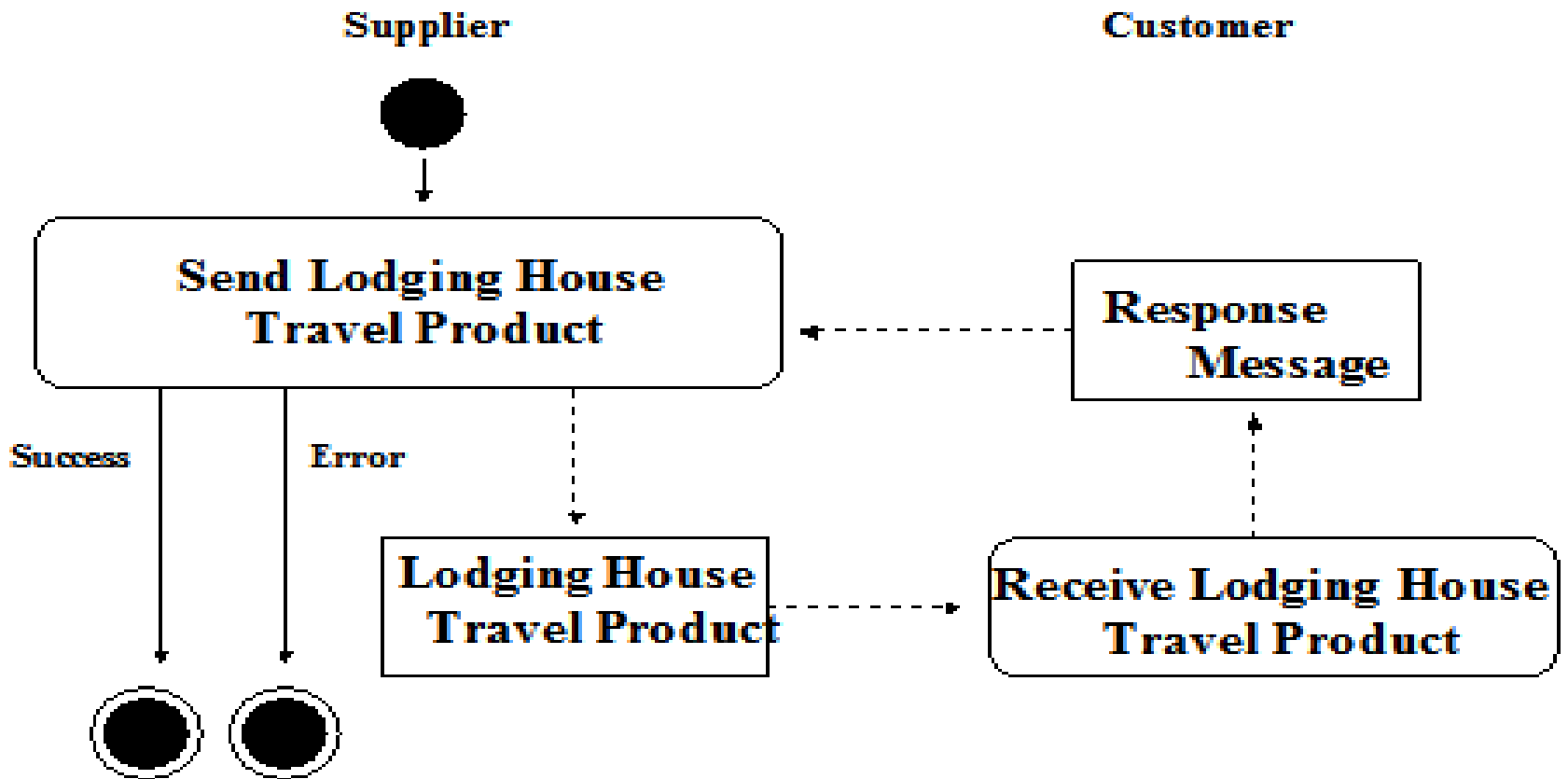
Figure 1 : Use Case Diagram : Lodging House Information

Activity Diagram for SLH Information Request and Response



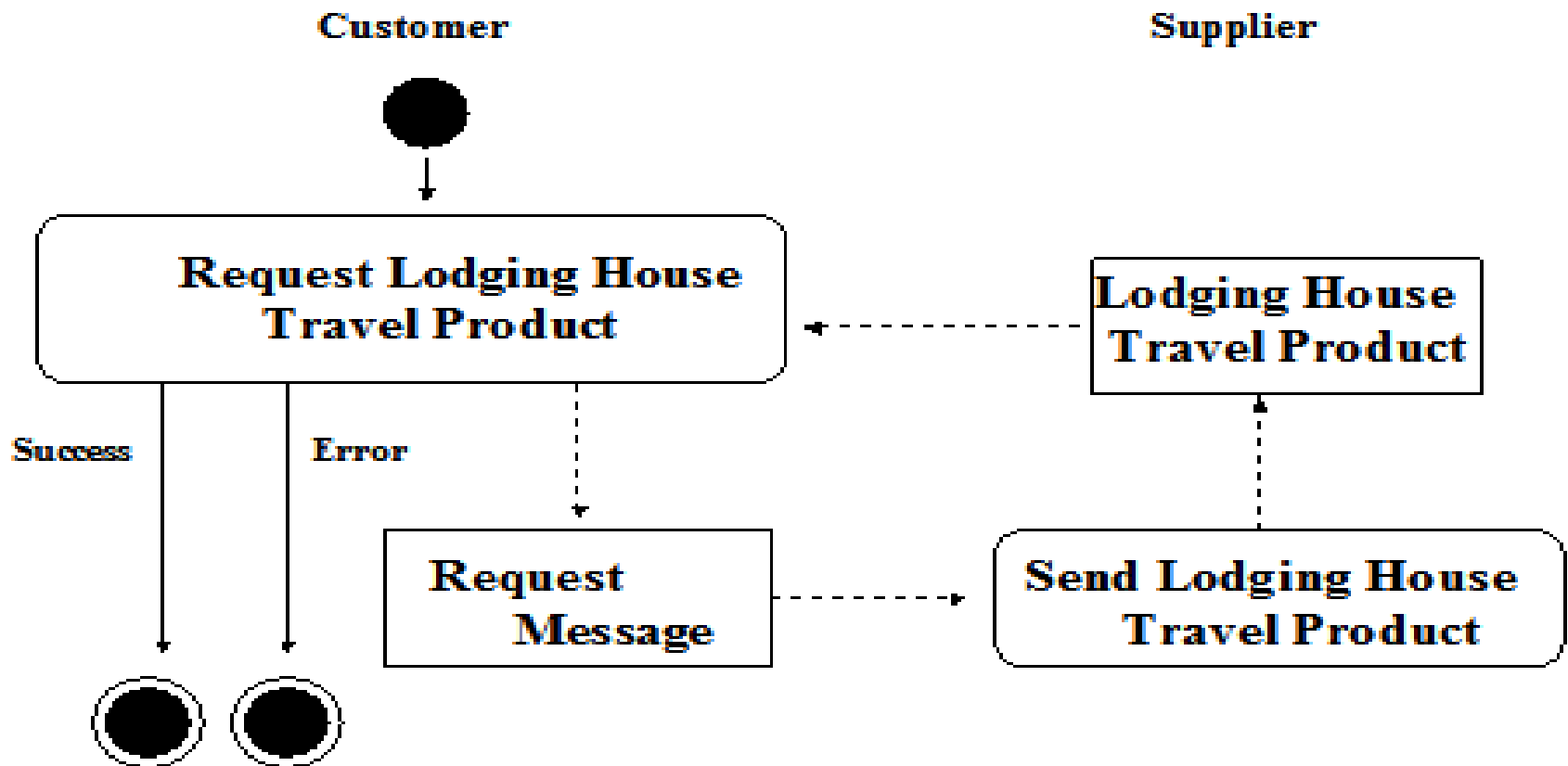
Activity Diagram -Case1

Activity Diagram (Lodging House Travel Product) —Case 1



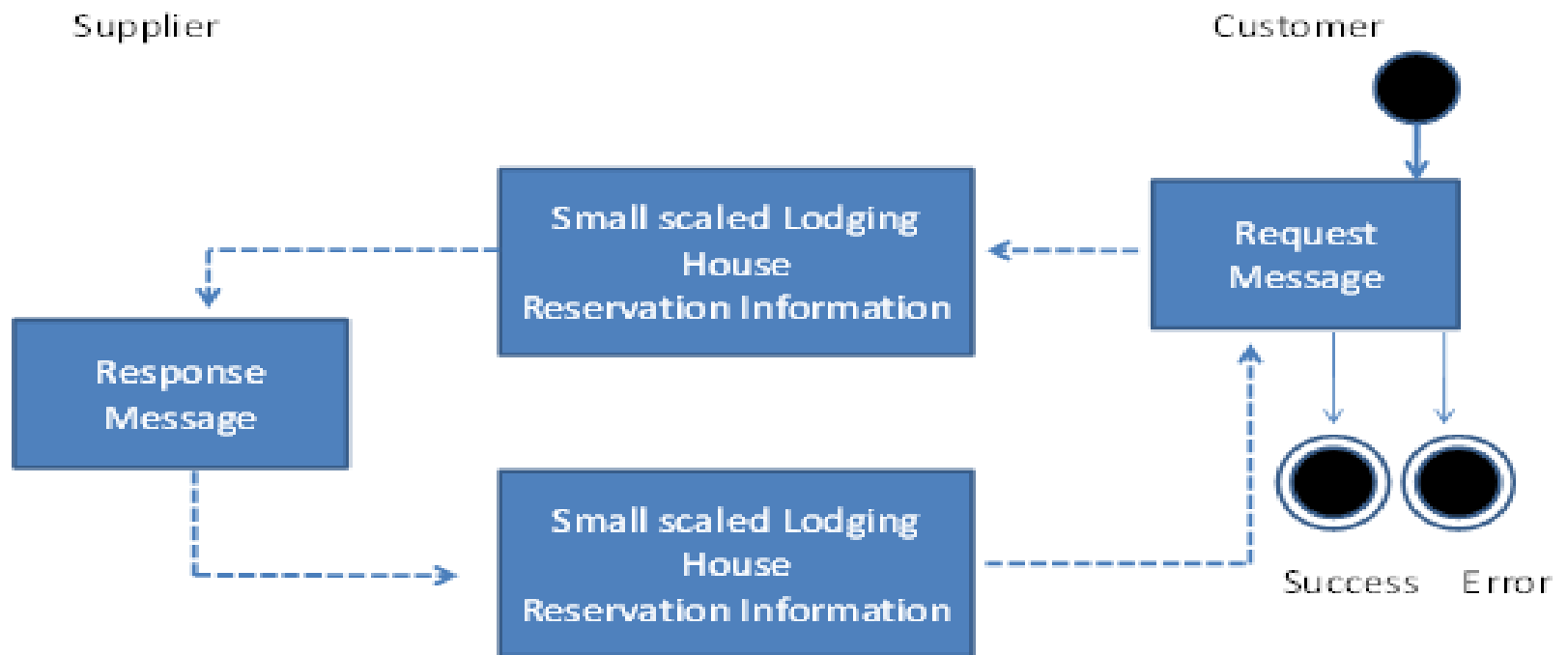
Activity Diagram- Case2

Activity Diagram (Lodging House Travel Product)—Case 2



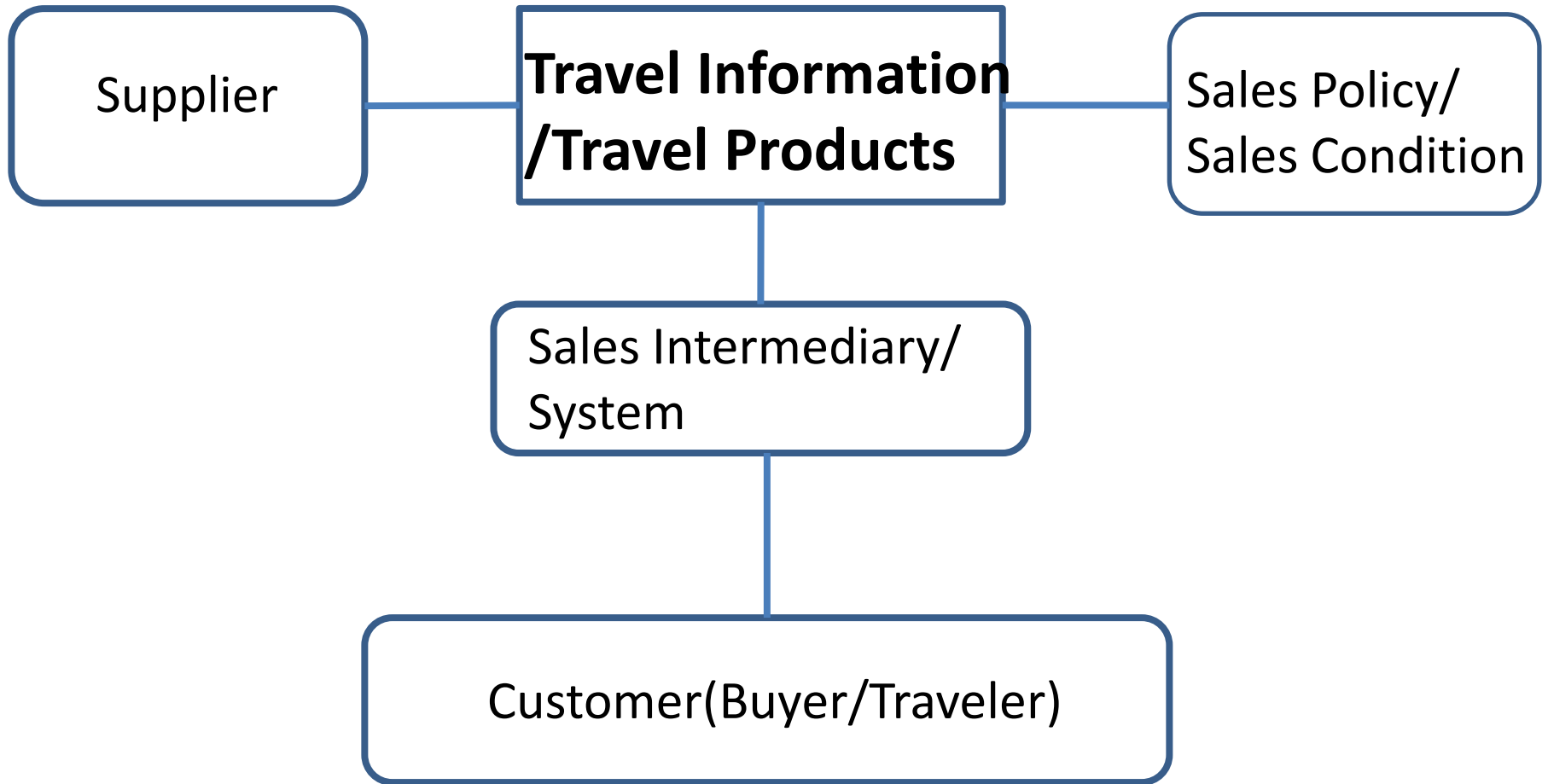
Activity Diagram for Reservation

Activity Diagram (Small scaled Lodging House Reservation Information Process)

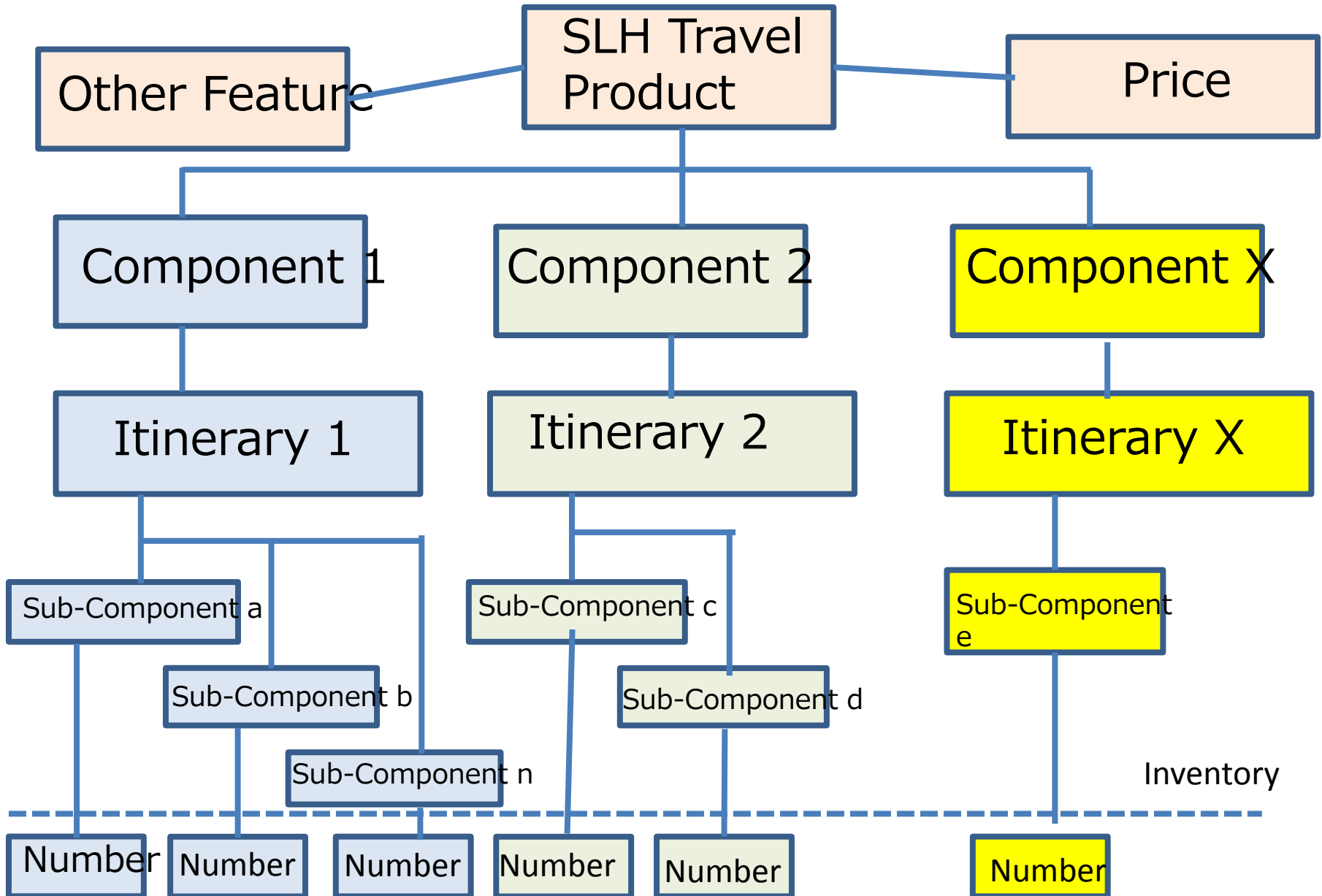


Comprehensive Travel Information

Trade between Supplier and Customer

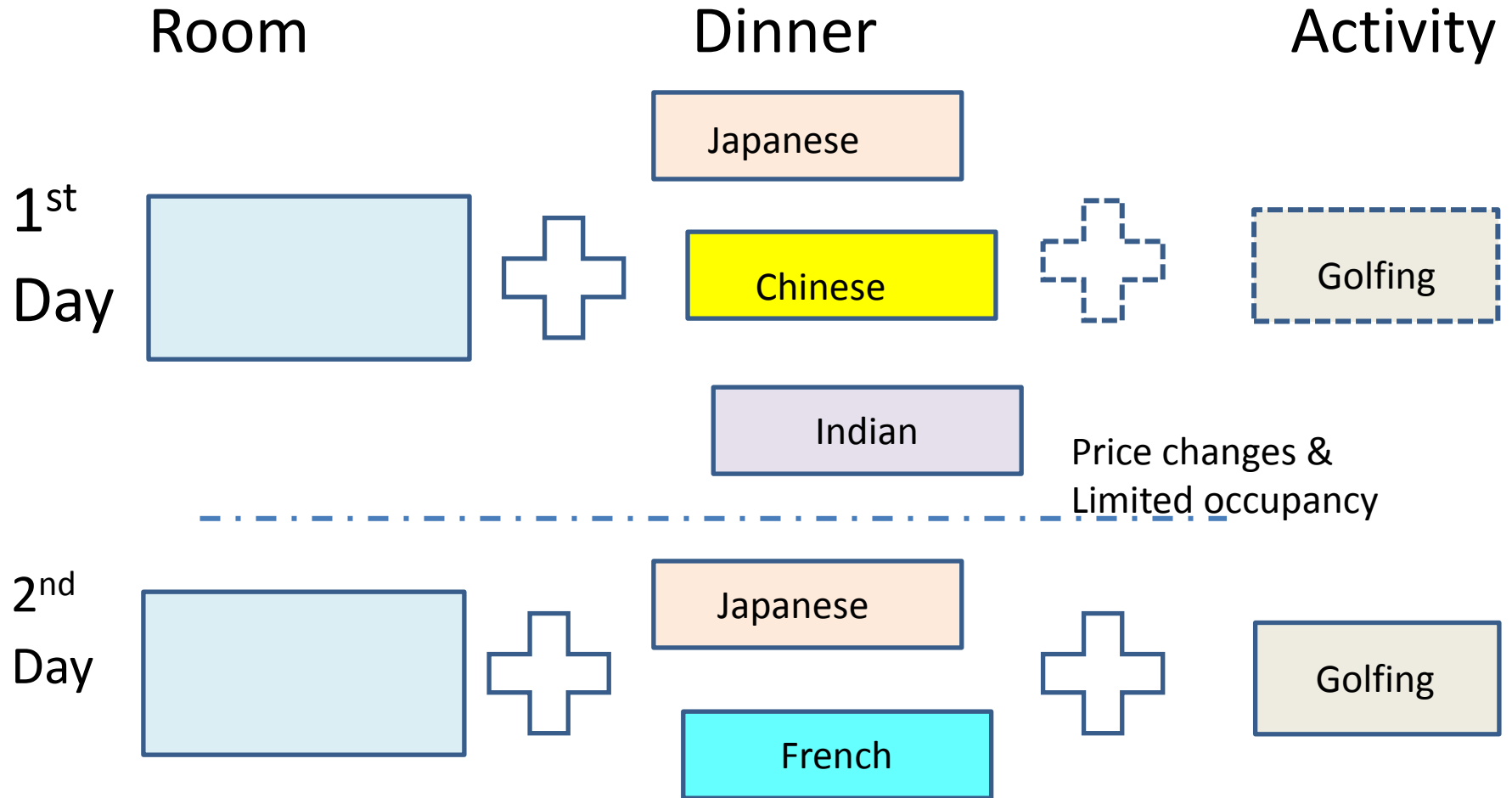


Structure of SLH Travel Products



An Example of SLH Travel Products

A Japanese style room with a selectable dinner and an activity



CC and BIE of UNCEFACT

